



USAID
FROM THE AMERICAN PEOPLE



COLLEGE OF EARTH AND
ATMOSPHERIC SCIENCES
AESEDA
THE ALLIANCE FOR EARTH
SCIENCE, ENGINEERING, AND
DEVELOPMENT IN AFRICA

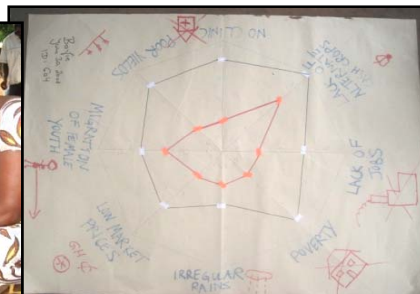
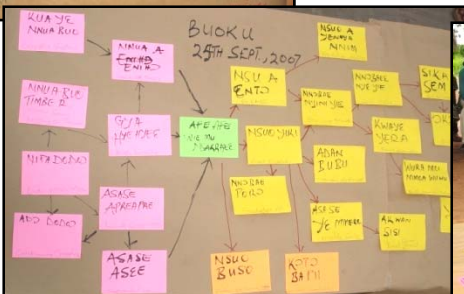
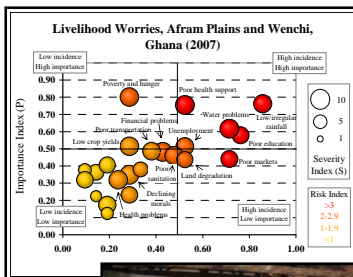
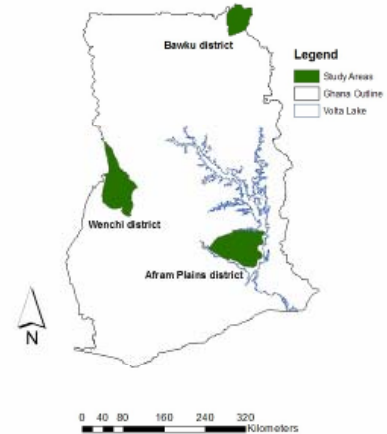


CCLONG: Climate Change Collective Learning and Observatory Network Ghana

Overview:

This project seeks to create a collective learning and observatory network on climate change in Ghana by bringing the science of climate change and the implications for people and the environment to a level that is understandable, accessible, and beneficial to all parties involved.

We follow a holistic perspective through community-based activities while exploring risk perception and human adaptive capacity for successful adaptation to climate change and other stressors. Collective learning and decision-making will facilitate the integration of adaptive capacity to climate change into viable responses to other, often more tangible threats.



Objective 1 (Year 1 & 2)

Assess perceptions of climate change and other threats among farmers, extension agents, researchers, and policy makers as well as determinants of adaptive capacity and decision-making for adaptation.

Methods:

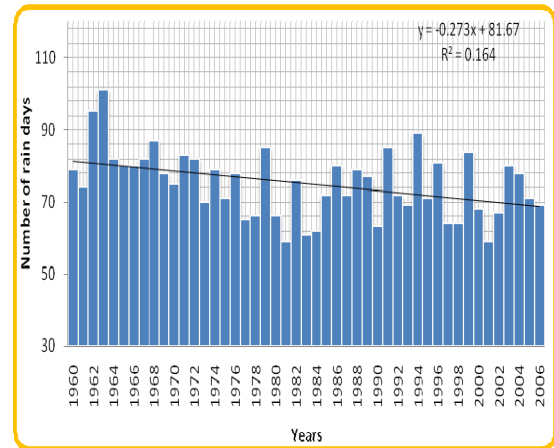
- Participatory risk mapping, ranking, and scoring of existing hazards experienced by people
- Individual mental models, or conceptual maps, on climate change
- Historical matrices on notable past climatic events, the impacts of these events, and actions taken to reduce impacts
- Household surveys to capture assets and vulnerabilities at the household level
- Structured interviews focusing on household responses to past and potential future climatic extremes.

Objective 2 (Year 1 & 2)

Adjust climate forecasts, soil and biomass measurements & modeling to place-specific needs

Methods:

- Refinement of climate data and predictions for use in the EPIC modeling program
- Questionnaires and semi-structured interviews of farmers' strategies in cropping methods
- Soil and biomass carbon measurements in specific land use & management practices
- Data collection on crop growth and field run off for maize
- Development of site-specific physiological crop models
- An EPIC workshop held in Accra in Sept. 2008.



Annual number of rain days over forest-savanna transitional zone in 1960-2005 (calculated after Ghana Meteorological Services)



Objective 3 (Year 2 & 3)

Encourage social learning and risk communication for facilitating adaptation and livelihood resilience

Methods:

- Discussion of historic climate trends with community members and agricultural extension agents
- Discussions with district policy makers and agricultural extension agents regarding knowledge (and gaps) of climatic changes and their drivers
- Training and installation of 6 rain gauges in project communities
- Training in the use of a video camera, creation of short story boards with local topics of interest (community life and noteworthy climate-related occurrences).

Objective 4 (Year 3)

Identify land use and management practices, socio-economic strategies, and institutional arrangements that contribute to more resilient livelihoods and eco-systems (adaptation)

Methods:

- Future adaptation projects in communities
- Build networks across multiple stakeholders.

Team Members:

Petra Tschakert (PI)

Mark Abekoe

Samuel Adiku

William Agyemang-Bonsu

Helen Asiama

Lucy Adzoyi Atidoh

Mary Barima

Samuel Nii Codjoe

William Easterling

Samuel Kwame Kumahor

Michael Mann

Abu Mumuni

Gifty Ofori-Darko

Regina Sagoe

Emmanuel Tachie-Obeng

Participating Communities:

Afram Pains:
MemChemfre
Xedzodzoekope
Akyemfour
Ekye Amanfrom

Wenchi:
Asuano
Bouku
Bofie

Bawku East:
Kadi
Denugu
Pusiga