

Data description for the BRANCH project species results

Data for all the species modelled is available in various formats. Each zip files contains a number of folders – MAP, STATS and TXT are the ones which will be of most interest.

MAP

This folder contains JPEG images of the results mapped for Europe on the 10km grid. There are 2 types of maps:

(1) Climate Space Only and (2) Climate Suitability Surface

(1) Climate Space maps

These maps show predicted presence/absence for the species in question. The maps are named *species_name_scenario.jpg*.

The key is shown on each map.

NB

The map named *species_name_EUNAbasenorm.jpg* is the current distribution as input to the model while the map *species_name_EUNAbase10.jpg* is the current distribution as simulated by the model.

(2) Climate Suitability Surface maps

These maps show the predicted suitability of the climate for each species. The data is a value between 0 and 1 with 1 being most suitable. The climate space maps are obtained by applying a threshold to these maps – the threshold is species specific and can be found in the TXT folder.

The maps are named *species_name_scenario_suit.jpg*

The maps each have a key and colour scheme on them explaining the theme.

These maps are jpegs and so can be inserted into documents as images. They cannot be modified.

STATS

This folder contains the statistical information used in the model. The threshold value used in the presence absence calculations can be found in here, as can the ROC and kappa statistics.

TXT

This folder contains the text files containing the underlying data from which the maps are generated.

The files are named *species_name_scenario.txt* and contain 4 columns of data with headers. They contain columns of easting, northing, SimPres and Thres.

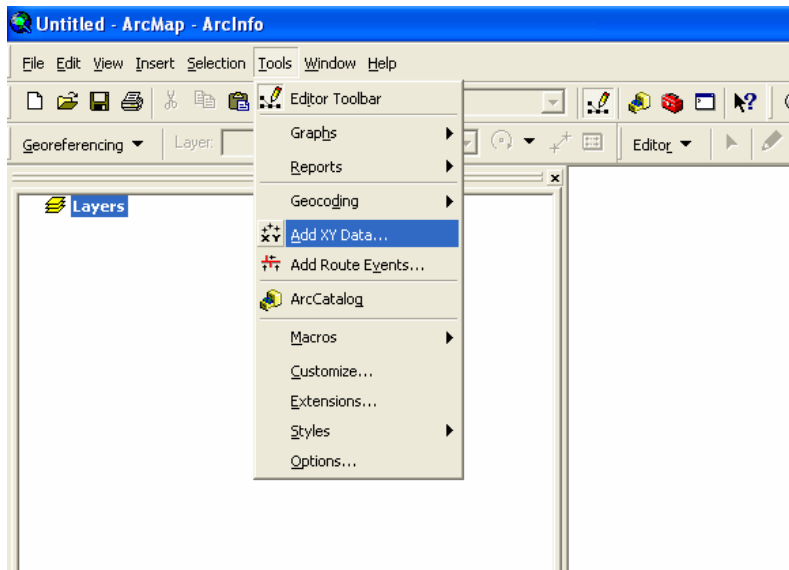
The SimPres is the unthresholded value of the simulated probability of species occurrence, and so is a value between 0 and 1. The Thres value is either 1 or 0 and is the thresholded value (found in the stats file) of the SimPres column.

Instructions for importing the text files into ArcMap

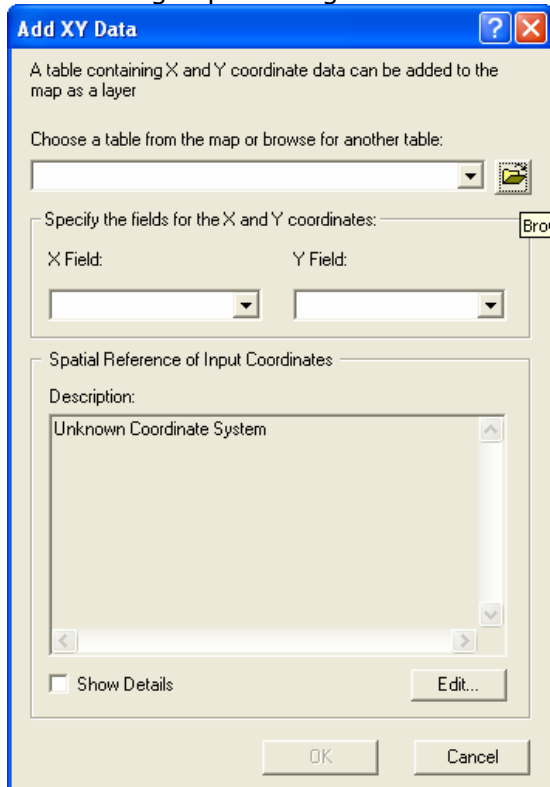
- 1 Save the desired text file on to your computer.
- 2 Open ArcMap and start with a new empty map.



- 3 On the Tools menu, click Add XY data.

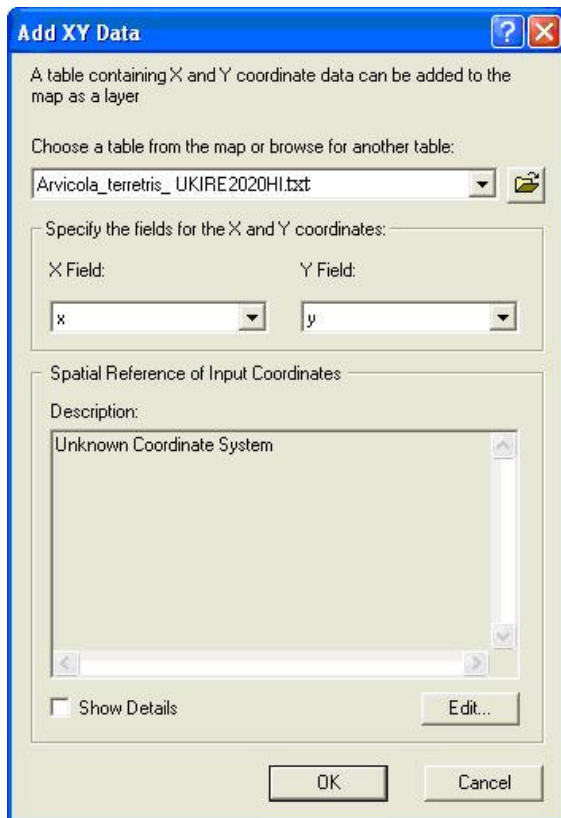


- 4 This brings up a dialog box. Click the Browse icon (file icon)



- 5 Select the file you wish to add and click ok.

6 Using the drop down menu in each of the X field and Y fields, select X and Y. This will use these columns to locate the data. Click OK.



7 This will draw the points on your map as a layer. You can then proceed with further processing for example, display options or grid operations.